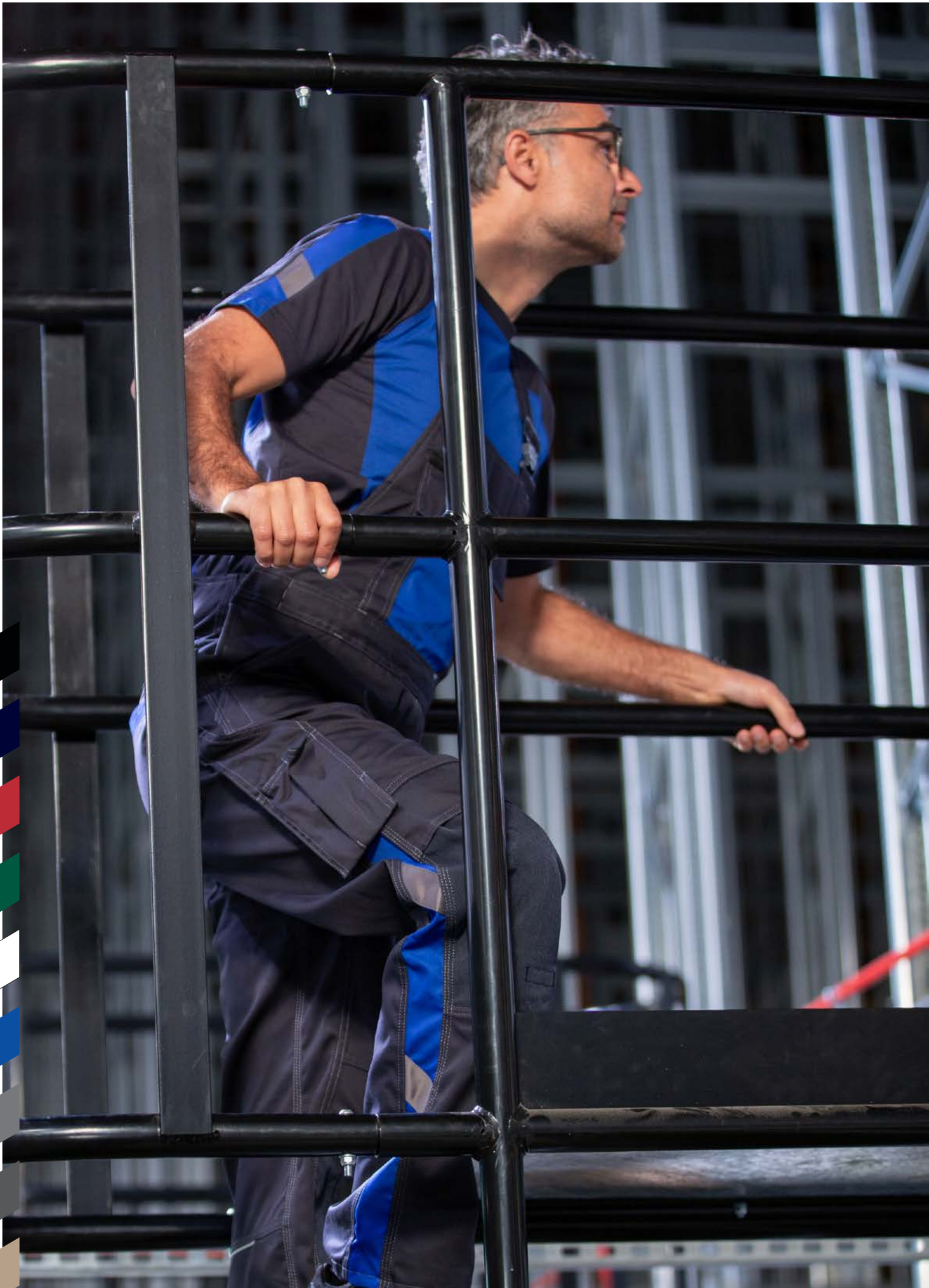


EN

# MASCOT® WORKWEAR

MASCOT® UNIQUE Find single and two-coloured workwear products for a wide range of industries



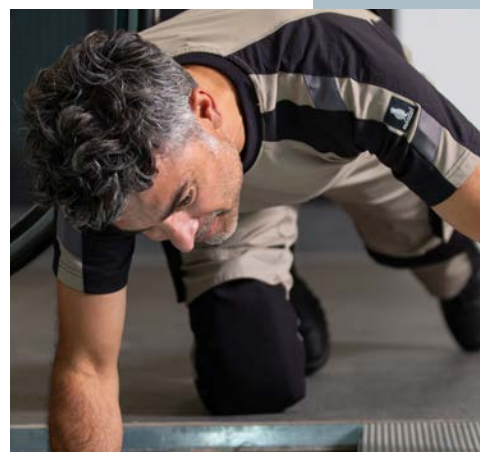
EVERYTHING IN  
ONE PLACE.

***NINE COLOURS***

SINGLE COLOUR  
AND TWO-  
COLOURED.

***ALL INDUSTRIES.***

Two-coloured workwear in nine different colour combinations, many different product and fabric qualities allowing for countless variations. The range is so broad that the entire spectrum of trade and industry can find clothes that are perfect for them. Moreover, the range is also certified with all relevant standards.







# SEGMENTS & COLOURS



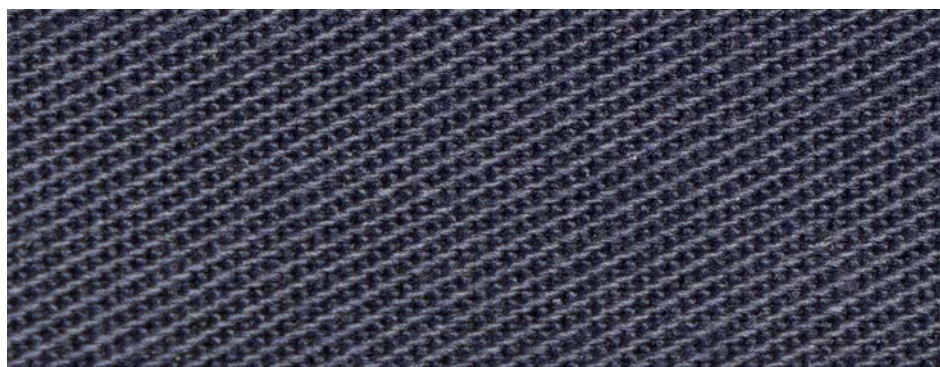
# TROUSERS IN DIFFERENT FABRIC QUALITIES

MASCOT® UNIQUE offers trousers in five different fabric qualities. Each fabric quality has its own unique properties that are suited for specific work situations and environments. For that reason, it is important that you always base your choice of material on your work duties and conditions, such as temperature and weather.

No matter whether you are looking for feather-light trousers or a hard-wearing and wear-resistant material, you will find it in this range.

# TROUSERS IN DIFFERENT FABRIC QUALITIES

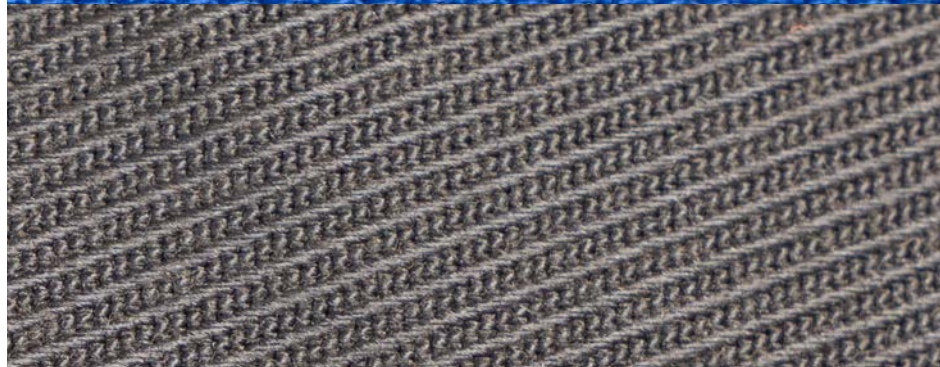
442



230



203



459







**Fabric quality 442: Light and very durable trousers.** Light and durable fabric quality suited for industrial work and all types of trade. These trousers are also well suited for industrial washing.

**Fabric quality 230: Ultra lightweight trousers.** Trousers in a super light fabric quality (205g/m<sup>2</sup>) with a high cotton content. These trousers are ideal for industrial work and warm environments.

**Fabric quality 203: Strong and robust fabric with TENCEL®.** Trousers in a robust and very durable fabric quality with cooling properties: These trousers are ideal for work within trade and construction. They are also well suited for industrial washing.

**Quality 459: Very durable with good freedom of movement.** Incredibly durable fabric quality with amazing levels of comfort due to its high cotton content. The trousers are ideal for working in warmer surroundings and in industrial environments. They are also suitable for industrial washing.

# 12779-442



**CORDURA**  
F A B R I C

**ProWash**<sup>®</sup>  
EN ISO 15797

### Trousers with kneepad pockets

12679-442 Two-coloured

12779-442 Single colour

65% polyester / 35% cotton

270 g/m<sup>2</sup>

- Light and durable trousers ideal for work in industrial settings and all types of trade.
- The trousers have triple stitch seams on the inside of the legs which extend the lifespan of the trousers.
- Extra durable knees reinforced with CORDURA<sup>®</sup>.
- Suitable for industrial washing.



# 13079-230



**CORDURA**  
F A B R I C

### Trousers with kneepad pockets

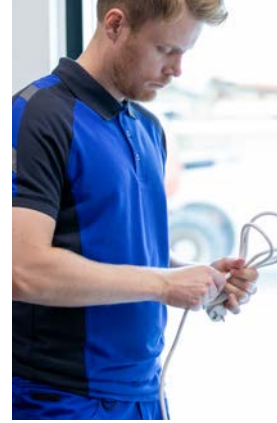
13079-230 Two-coloured

16079-230 Single colour

50% cotton / 50% polyester

205 g/m<sup>2</sup>

- Super light trousers with a high cotton content.
- Ideal for work in industrial settings and warm environments.
- The trousers have triple stitch seams on the inside of the legs which extend the lifespan of the trousers.



# 12179-203



**CORDURA**<sup>®</sup> **ProWash**<sup>®</sup>  
F A B R I C EN ISO 15797

### Trousers with kneepad pockets

12179-203 Two-coloured

12479-203 Single colour

70% Polyester/30% Lyocell (TENDEL<sup>®</sup>)

340 g/m<sup>2</sup>

- Contains TENDEL<sup>®</sup> which makes the fabric cooler, softer and highly moisture absorbing.
- The trousers have triple stitch seams on the inside of the legs which extend the lifespan of the trousers.
- Extra durable knee area reinforced with CORDURA<sup>®</sup>.



# 20279-459



**CORDURA**  
F A B R I C

**ProWash**<sup>®</sup>  
EN ISO 15797

### Trousers with kneepad pockets

21979-459 Two-coloured

20279-459 Single colour

58% Cotton/39% Polyester/3% Elastolefin  
320 g/m<sup>2</sup>

- Durable and comfortable trousers with a high cotton content and stretch properties.
- The trousers have triple stitch seams on the inside of the legs which extend the lifespan of the trousers.
- Extra durable knee area reinforced with CORDURA<sup>®</sup>.
- Suitable for industrial washing.



# 18678-230



#### Trousers for women in two different fits

**18678-230** Two-coloured, DIAMOND

**18778-230** Single colour, DIAMOND

**18688-230** Two-coloured, PEARL

**18788-230** Single colour, PEARL

50% cotton / 50% polyester  
205 g/m<sup>2</sup>

- Super light trousers with high cotton content.
- Ideal for work in industrial settings and warm environments.
- The trousers have triple stitch seams on the inside of the legs which extend the lifespan of the trousers.



# TROUSERS FOR WOMEN IN TWO DIFFERENT FITS

Choose between DIAMOND & PEARL.  
The difference between the two fits is the  
relationship between the hip and waist  
measurements:

If this is greater than 20 cm, we recommend a DIAMOND fit.  
If this is less than 20 cm, we recommend a PEARL fit.

Trousers which do not come in a women's version are designed so that  
they can also be worn by women. We therefore suggest that you always  
try the trousers on to find the ones that are the best fit for you.







## FOR EVERYDAY WEAR AND TEAR

Many of the trousers have CORDURA® reinforcements in particularly vulnerable and exposed areas such as the knees and the holster pockets. This helps to boost the wear resistance of the garments when working at a fast pace. It also helps to ensure a long lifespan of the trousers



# THE ENTIRE RANGE FOR TOPS

The MASCOT® UNIQUE range has everything you could need. In this one range, you can find moisture-wicking inner layers, insulating middle layers and wind and waterproof outer layers. By layering up in different combinations, you are guaranteed optimal protection all year round.



# 18601-411



## Shell jacket

**18601-411**

87% polyamide / 13% elastane

200 g/m<sup>2</sup>

- Unique freedom of movement, where nothing feels tight or bothersome.
- Lightweight, but extremely high wear resistance.
- Breathable, wind and waterproof.

11010

1809

010

09

# 18603-316



## Fleece with zip

**18603-316**

94% polyester / 6% elastane

260 g/m<sup>2</sup>

- Dirt and dust do not stick as the fleece has a smooth surface.
- Modern, tighter fit with great freedom of movement.

11010

1809

010

09



# CLIMASCOT®

Lightweight Insulation

Many of the tops are developed with CLIMASCOT® – a lightweight lining to help your body keep the heat in. The lining material is made of 35% recycled polyester.



# 16002-149



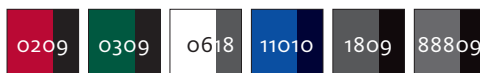
## Winter jacket

**16002-149**

97% polyester / 3% elastane

305 g/m<sup>2</sup>

- Breathable, windproof and water repellent.
- Unique CLIMASCOT® insulation effectively keeps the heat in and is light, soft and very compact when compressed.





# 12002-149



## Softshell jacket

12002-149 Two-coloured

12102-149 Single colour

97% polyester / 3% elastane

305 g/m<sup>2</sup>

- Breathable, windproof and water repellent.
- Very comfortable with fleece lining on the inside.





ProWash®

EN ISO 15797

WORKWEAR DEVELOPED FOR INDUSTRIAL WASHING



# WIDE SELECTION OF PRODUCTS THAT ARE SUITABLE FOR INDUSTRIAL WASHING

A lot of the workwear in MASCOT® UNIQUE is suitable for industrial washing and drying. Look out for the ProWash® symbol to find products that are suited for industrial washing.







MIX AND MATCH WITH  
MORE THAN 700  
*PRODUCTS* IN OUR  
COLLECTION

0209

RED/BLACK



50569-961-0209  
Polo shirt



50567-959-0209  
T-shirt



50568-959-0209  
T-shirt, long-sleeved



50570-962-0209  
Sweatshirt



50566-963-0209  
Hoodie with zipper



16003-302-0209  
Fleece Jacket



12002-149-0209  
Softshell Jacket



12009-203-0209 \*  
Jacket



12209-442-0209  
Jacket



15615-249-0209 \*  
Thermal Jacket



16002-149-0209  
Winter Jacket



12035-211-0209  
Winter Jacket



12079-203-0209  
Trousers with thigh pockets



12579-442-0209  
Trousers with thigh pockets



12049-442-0209 \*  
Shorts



18349-230-0209 \*  
Shorts



12169-442-0209  
Bib & Brace with kneepad  
pockets



12069-203-0209 \*  
Bib & Brace with kneepad  
pockets



0309

## GREEN/BLACK



50569-961-0309  
Polo shirt



50567-959-0309  
T-shirt



50568-959-0309  
T-shirt, long-sleeved



50570-962-0309  
Sweatshirt



50566-963-0309  
Hoodie with zipper



12002-149-0309  
Softshell Jacket



12009-203-0309 \*  
Jacket



12209-442-0309  
Jacket



16002-149-0309  
Winter Jacket



12035-211-0309  
Winter Jacket





12679-442-0309  
Trousers with kneepad  
pockets



13079-230-0309  
Trousers with kneepad  
pockets



12179-203-0309 \*  
Trousers with kneepad  
pockets



12079-203-0309 \*  
Trousers with thigh pockets



12049-442-0309 \*  
Shorts



18349-230-0309  
Shorts



14149-442-0309 \*  
3/4 Length Trousers with  
kneepad pockets



12169-442-0309  
Bib & Brace with kneepad  
pockets



12069-203-0309 \*  
Bib & Brace with kneepad  
pockets



\* Available while stocks last

0618

# WHITE/DARK ANTHRACITE



50569-961-0618  
Polo shirt



50567-959-0618  
T-shirt



50568-959-0618  
T-shirt, long-sleeved



50570-962-0618  
Sweatshirt



50572-963-0618 \*  
Hoodie



50566-963-0618  
Hoodie with zipper



50565-963-0618  
Sweatshirt with zipper



12002-149-0618  
Softshell Jacket



16002-149-0618  
Winter Jacket



12035-211-0618  
Winter Jacket



17631-442-0618  
Trousers with holster pockets



14031-203-0618 \*  
Trousers with holster pockets



12679-442-0618  
Trousers with kneepad  
pockets



13079-230-0618  
Trousers with kneepad  
pockets



12179-203-0618  
Trousers with kneepad  
pockets



18678-230-0618  
Trousers



18688-230-0618  
Trousers



14349-442-0618 \*  
¾ Length Trousers with  
holster pockets



14149-442-0618  
¾ Length Trousers with  
kneepad pockets



12049-442-0618 \*  
Shorts



18349-230-0618  
Shorts



12169-442-0618  
Bib & Brace with kneepad  
pockets



12069-203-0618 \*  
Bib & Brace with kneepad  
pockets



\* Available while stocks last

5509

LIGHT KHAKI/BLACK



50569-961-5509  
Polo shirt



50567-959-5509  
T-shirt



50568-959-5509  
T-shirt, long-sleeved



50570-962-5509  
Sweatshirt



50566-963-5509 \*  
Hoodie with zipper



12002-149-5509  
Softshell Jacket



12009-203-5509  
Jacket



12209-442-5509 \*  
Jacket



12035-211-5509  
Winter Jacket



17631-442-5509 \*  
Trousers with holster pockets



14031-203-5509 \*  
Trousers with holster pockets



12679-442-5509  
Trousers with kneepad  
pockets



13079-230-5509  
Trousers with kneepad  
pockets



12179-203-5509 \*  
Trousers with kneepad  
pockets



12049-442-5509 \*  
Shorts



18349-230-5509 \*  
Shorts



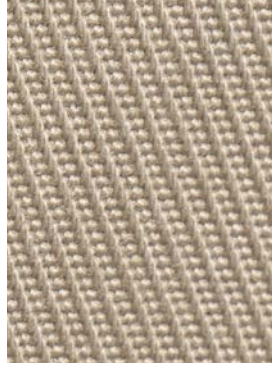
14349-442-5509 \*  
3/4 Length Trousers with  
holster pockets



12169-442-5509  
Bib & Brace with kneepad  
pockets



12069-203-5509 \*  
Bib & Brace with kneepad  
pockets



\* Available while stocks last

01011

DARK NAVY/ROYAL



12209-442-01011  
Jacket



12679-442-01011  
Trousers with kneepad pockets



12179-203-01011  
Trousers with kneepad pockets



12579-442-01011  
Trousers with thigh pockets



12079-203-01011 \*  
Trousers with thigh pockets



12169-442-01011  
Bib & Brace with kneepad  
pockets



12069-203-01011  
Bib & Brace with kneepad  
pockets



11010

ROYAL/DARK NAVY



50569-961-11010  
Polo shirt



50567-959-11010  
T-shirt



50568-959-11010  
T-shirt, long-sleeved



50570-962-11010  
Sweatshirt



50572-963-11010  
Hoodie



50566-963-11010  
Hoodie with zipper



50565-963-11010  
Sweatshirt with zipper



50610-962-11010  
Polo Sweatshirt



18603-316-11010  
Fleece Jumper with zipper



15603-259-11010 \*  
Fleece Jacket



16003-302-11010  
Fleece Jacket



12002-149-11010  
Softshell Jacket



12009-203-11010 \*  
Jacket



12209-442-11010  
Jacket



18615-318-11010  
Thermal Jacket



15615-249-11010  
Thermal Jacket



18665-318-11010  
Thermal Gilet



18601-411-11010  
Outer Shell Jacket

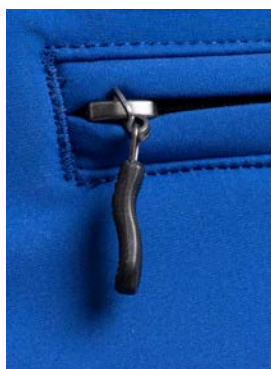
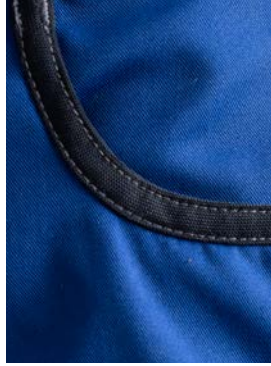


16002-149-11010  
Winter Jacket



12035-211-11010  
Winter Jacket





12679-442-11010  
Trousers with kneepad  
pockets



13079-230-11010  
Trousers with kneepad  
pockets



12179-203-11010  
Trousers with kneepad  
pockets



12579-442-11010  
Trousers with thigh pockets



16279-230-11010  
Trousers with thigh pockets



12079-203-11010 \*  
Trousers with thigh pockets



18678-230-11010  
Trousers



18688-230-11010 \*  
Trousers



12049-442-11010 \*  
Shorts



18349-230-11010  
Shorts



12169-442-11010  
Bib & Brace with kneepad  
pockets



12069-203-11010  
Bib & Brace with kneepad  
pockets



14149-442-11010 \*  
3/4 Length Trousers with  
kneepad pockets

\* Available while stocks last

010

DARK NAVY



18603-316-010  
Fleece Jumper with zipper



15703-259-010  
Fleece Jacket



16103-302-010  
Fleece Jacket



12102-149-010  
Softshell Jacket



20309-459-010  
Jacket



12109-203-010 \*  
Jacket



12154-442-010  
Gilet



18615-318-010  
Thermal Jacket



15715-249-010  
Thermal Jacket



18665-318-010  
Thermal Gilet



18601-411-010  
Outer Shell Jacket



12135-211-010  
Winter Jacket



17731-442-010  
Trousers with holster pockets



12779-442-010  
Trousers with kneepad pockets



16079-230-010  
Trousers with kneepad pockets



12479-203-010  
Trousers with kneepad pockets



20279-459-010  
Trousers with kneepad pockets



16179-230-010  
Trousers with thigh pockets



18778-230-010  
Trousers



18788-230-010 \*  
Trousers



14249-442-010  
¾ Length Trousers with kneepad pockets



\* Available while stocks last

09

BLACK



18603-316-09  
Fleece Jumper with zipper



15703-259-09  
Fleece Jacket



16103-302-09  
Fleece Jacket



12102-149-09  
Softshell Jacket



20309-459-09  
Jacket



12109-203-09 \*  
Jacket



12154-442-09  
Gilet



18615-318-09  
Thermal Jacket



15715-249-09  
Thermal Jacket



18665-318-09  
Thermal Gilet



18601-411-09  
Outer Shell Jacket



12135-211-09  
Winter Jacket



17731-442-09  
Trousers with holster pockets



14131-203-09 \*  
Trousers with holster pockets



12779-442-09  
Trousers with kneepad pockets



16079-230-09  
Trousers with kneepad pockets



12479-203-09  
Trousers with kneepad pockets



20279-459-09  
Trousers with kneepad pockets



16179-230-09  
Trousers with thigh pockets



18778-230-09  
Trousers



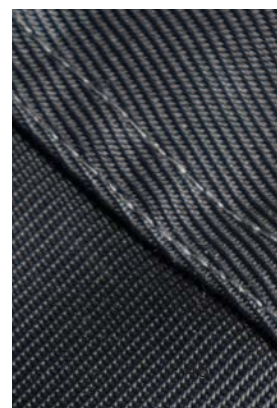
18788-230-09 \*  
Trousers



14449-442-09 \*  
¾ Length Trousers with holster pockets



14249-442-09  
¾ Length Trousers with kneepad pockets



\* Available while stocks last

0918

# BLACK/DARK ANTHRACITE



50569-961-0918  
Polo shirt



50567-959-0918  
T-shirt



50568-959-0918  
T-shirt, long-sleeved



50570-962-0918  
Sweatshirt



50572-963-0918  
Hoodie



50566-963-0918  
Hoodie with zipper



21909-459-0918  
Jacket



12679-442-0918  
Trousers with kneepad  
pockets



12179-203-0918  
Trousers with kneepad  
pockets



21979-459-0918  
Trousers with kneepad  
pockets



12579-442-0918  
Trousers with thigh  
pockets



12079-203-0918 \*  
Trousers with thigh  
pockets



12069-203-0918  
Bib & Brace with kneepad  
pockets

88809

ANTHRACITE/BLACK



50569-961-88809  
Polo shirt



50567-959-88809  
T-shirt



50570-962-88809  
Sweatshirt



16003-302-88809  
Fleece Jacket



12002-149-88809  
Softshell Jacket



12209-442-88809  
Jacket



12254-442-88809 \*  
Gilet



16002-149-88809  
Winter Jacket



12035-211-88809  
Winter Jacket



18349-230-88809  
Shorts



12049-442-88809 \*  
Shorts



12679-442-88809  
Trousers with kneepad  
pockets



13079-230-88809  
Trousers with kneepad  
pockets



12579-442-88809  
Trousers with thigh pockets



16279-230-88809 \*  
Trousers with thigh pockets



12169-442-88809  
Bib & Brace with kneepad  
pockets

1809

DARK ANTHRACITE/BLACK



50569-961-1809  
Polo shirt



50567-959-1809  
T-shirt



50568-959-1809  
T-shirt, long-sleeved



50570-962-1809  
Sweatshirt



50572-963-1809  
Hoodie



50566-963-1809  
Hoodie with zipper



50565-963-1809  
Sweatshirt with zipper



50610-962-1809  
Polo Sweatshirt



18603-316-1809  
Fleece Jumper with zipper



16003-302-1809  
Fleece Jacket



12002-149-1809  
Softshell Jacket



21909-459-1809  
Jacket



12009-203-1809  
Jacket



12209-442-1809  
Jacket



18615-318-1809  
Thermal Jacket



15615-249-1809  
Thermal Jacket



18665-318-1809  
Thermal Gilet



18601-411-1809  
Outer Shell Jacket



16002-149-1809  
Winter Jacket



12035-211-1809  
Winter Jacket





17631-442-1809  
Trousers with holster pockets



14031-203-1809 \*  
Trousers with holster pockets



12679-442-1809  
Trousers with kneepad  
pockets



13079-230-1809  
Trousers with kneepad  
pockets



12179-203-1809  
Trousers with kneepad  
pockets



21979-459-1809  
Trousers with kneepad  
pockets



12579-442-1809  
Trousers with thigh pockets



16279-230-1809  
Trousers with thigh pockets



12079-203-1809 \*  
Trousers with thigh pockets



18678-230-1809  
Trousers



18688-230-1809  
Trousers



\* Available while stocks last

1809

DARK ANTHRACITE/BLACK



12049-442-1809 \*  
Shorts



18349-230-1809  
Shorts



14149-442-1809 \*  
3/4 Length Trousers with kneepad  
pockets

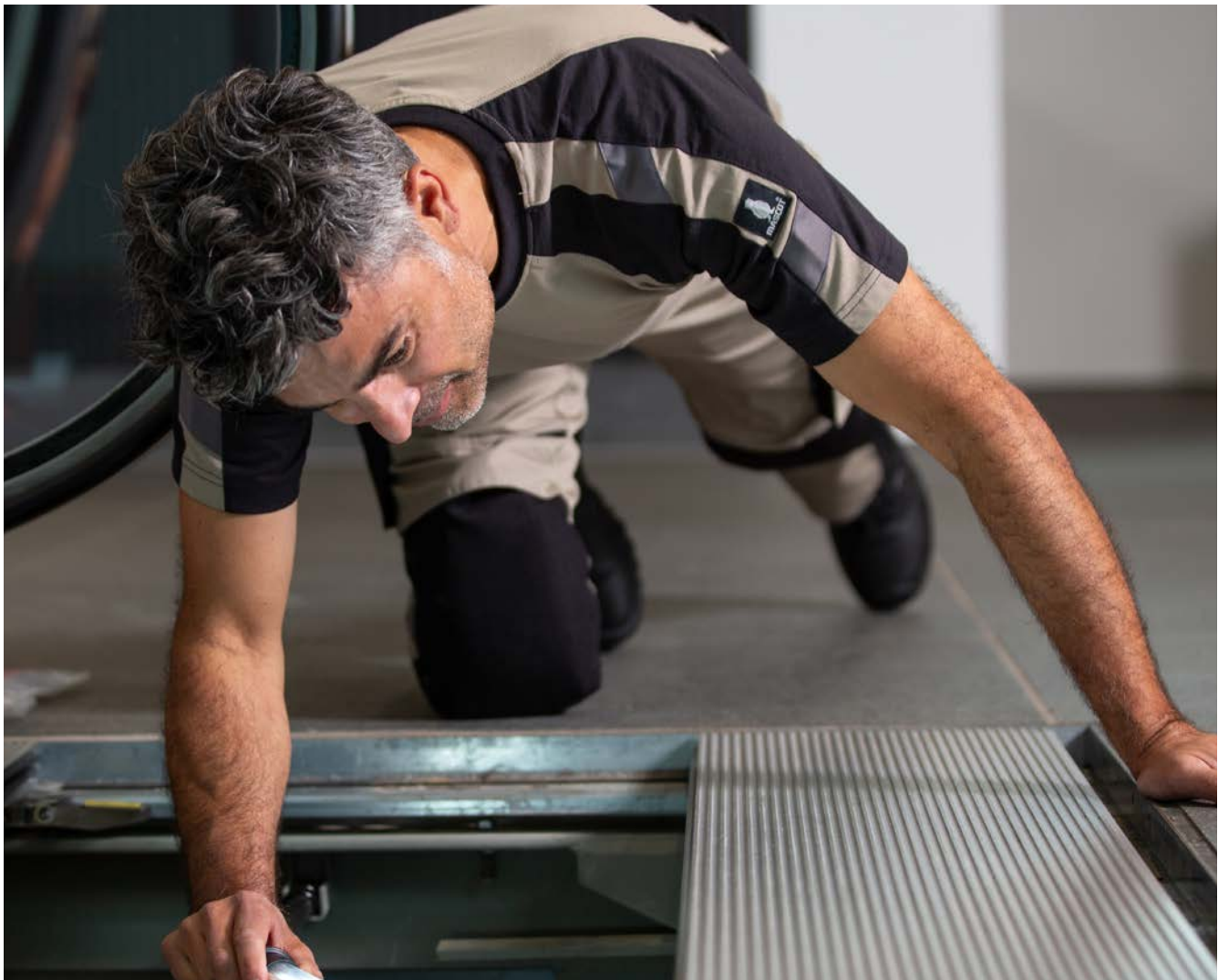


12169-442-1809  
Bib & Brace with kneepad  
pockets



12069-203-1809  
Bib & Brace with kneepad  
pockets





# A POSITIVE FOOTPRINT

At MASCOT, we work to reduce our consumption and our waste – and we do so by considering our entire supply and value chain. This holistic approach allows us to reduce consumption where it is most optimal to do so while holding back in places where taking action may hurt other parts of the value chain. It is not individual efforts that count, but the overall picture.



## Suppliers and business partners

We work with all suppliers to reduce the use of chemicals and water in general. We also always select suppliers according to their environmental profile, and the vast majority of our fabrics come from suppliers who have both Bluesign® and ISO 14001 certifications.

## Responsible production

We produce the vast majority of our products ourselves at our two SA8000-certified factories in Vietnam and Laos. The SA8000 certification is a guarantee to the outside world and our own employees that we have a safe and secure working environment and offer good working conditions adapted to local conditions.

## Workwear with long-lasting durability

We produce long-lasting workwear with responsibility for the environment and people. Long durability means that, over time, the user needs to buy fewer products. Meanwhile we reduce our overall resource consumption because we produce fewer products over the same period of time.

## Logistics with care

Our production is based in Vietnam and Laos and in our main warehouse in Denmark. The vast majority of our products are transported between Asia and Europe using modern container ships. We only work with shipping companies that are planning to convert their fleet from diesel engines to liquefied natural gas (LNG).

A monochromatic, teal-tinted photograph of a woman in a factory setting, focused on operating a sewing machine. She has a small flower hair clip in her hair. The background shows other workers and sewing machines, creating a sense of a busy industrial environment.

“

We invest in people and the environment in our supply chain, and we are highly conscious of the fact that we operate in an industry that has a large impact on the climate, and where we must fundamentally change the way we make our products.

*Michael Grosbøl, CEO and owner of MASCOT.*



## An all-in-one solution

The world's best workwear is more than just the product. At MASCOT, you are guaranteed great customer service, efficient logistics and high delivery reliability.



## Time-saving ordering

With MASCOT® SmartStore you avoid spending unnecessary time on clothing orders. The logistics and ordering system makes ordering and order management easy, fast and flawless.



## A global solution

Does your company have employees based in multiple countries? MASCOT makes workwear sourcing simpler with one global sourcing solution for your business.



## High security of supply

More than 98% of all orders are dispatched from our state-of-the-art, fully automated logistics centre within 24 hours. We also use some of Europe's largest and most reliable freight carriers, ensuring that shipments reach our customers quickly.



## Printing and embroidery

No matter which products you choose, adding transfer printing or embroidery could not be easier. MASCOT does it in-house, which helps keep delivery time down.



## Individual adjustment

Does your company have special requests or require other individual customisations? MASCOT offers bespoke solutions so you always get the workwear that matches your needs and wishes.

A man with grey hair, wearing a red and black long-sleeved work shirt and red work pants, is looking down at a blue work shirt on a table. The blue shirt has "MASCOT® WORKWEAR" printed on it. The man's shirt has a small Mascot logo on the sleeve. The background shows a blue machine and a window with a view of a green landscape.

WE OFFER MORE THAN  
JUST A PRODUCT

## Mascot International A/S

Silkeborgvej 14 · DK-7442 Engesvang · Denmark  
info@mascotworkwear.com · www.mascotworkwear.com  
Tel. +45 87 24 47 00



MASCOT® is a registered trademark, owned by Mascot International A/S.  
No liability accepted for product alterations, price changes, printing errors and inability to supply or deliver.



[www.facebook.com/mascotworkwear](http://www.facebook.com/mascotworkwear)



[www.linkedin.com/company/mascot-workwear/](http://www.linkedin.com/company/mascot-workwear/)



[www.youtube.com/@mascotworkwear](http://www.youtube.com/@mascotworkwear)



[www.instagram.com/mascot\\_workwear/](http://www.instagram.com/mascot_workwear/)



B0600-124-04 - EN012024